

Empire Genomics' 1p1q FISH Probe is designed to detect amplifications and deletions in the 1p32.3 and 1q21.3 chromosomal regions bearing the CDKN2C and CKS1B genes, respectively. The probe comes labeled in green and orange, but can be customized to meet your needs.

Gene Background: Multiple myeloma (MM) patients have been shown to consistently harbor aberrations in chromosome.¹ MM is a B-cell malignancy characterized by slow proliferation of malignant plasma cells occurring mostly in the bone marrow.² Chromosome 1 copy number variations are highly prevalent in MM, specifically 1p deletions and 1q gains/amplifications.¹ The CKS1B gene, located at 1q21.3, has been shown to become both duplicated and rearranged over the course of MM progression.¹ The CDKN2C gene at 1p32.3 belongs to the INK4 gene family, which consists of tumor suppressor genes that regulate cell proliferation; deletions of the CDKN2C are another consistent finding in MM patients.² Both CKS1B copy gains/losses and CDKN2C deletions are associated with poor prognosis in MM.³

1p1q Probe (1p32.3/1q21.3)

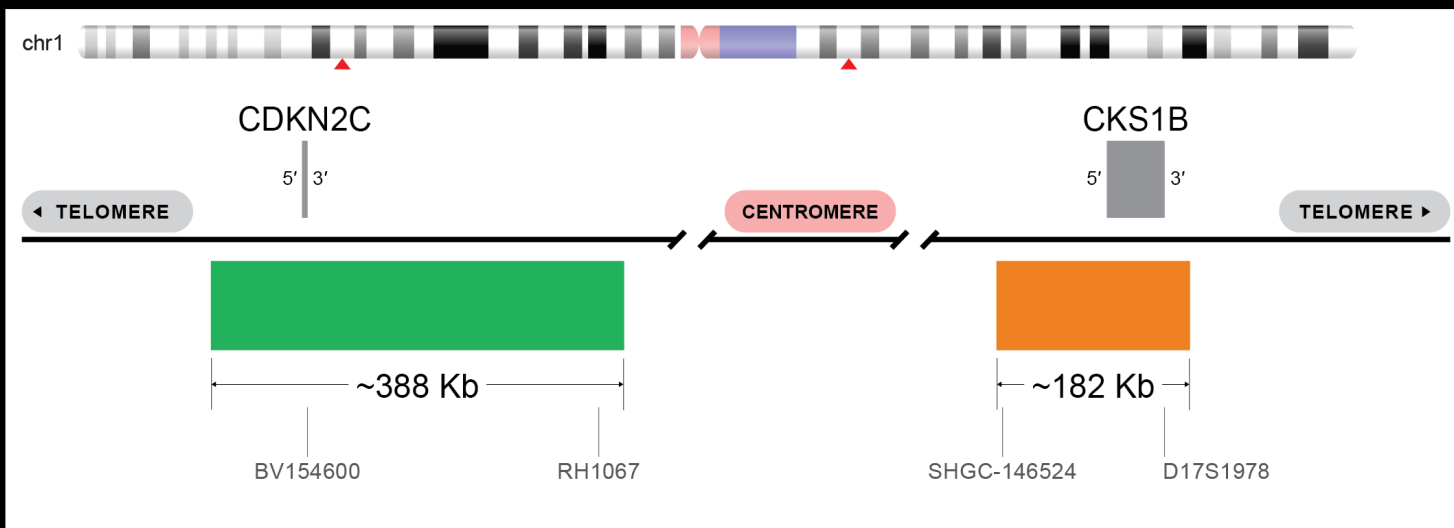


IMAGE NOT DRAWN TO SCALE

SKU	Test Kits	Buffer	Dye	Color	Price
1P1Q-20-GROR	20 (40 µL)	200 µL	● ●	● ●	\$1,910.00
1P1Q-20-GRGO	20 (40 µL)	200 µL	● ●	● ●	\$2,292.00
1P1Q-20-GRRE	20 (40 µL)	200 µL	● ●	● ●	\$2,292.00

Ordering Instructions:

To order the 1p1q FISH Probe, visit <https://www.empiregenomics.com/fish-probes/gene/1p1q+FISH+Probe>
or contact our office at **(716) 856-3873**.

** For in vitro use only / CE marked in certain countries / RUO in US and other countries*